



# Clean, bond and seal.

With our high-quality products for workshop and industry.



**KENT** 

**ROTABOND  
2000**

**NSF**

**SILVER GREY**

**High strength UV resistant MS Polymer based  
sealer and adhesive**

Excellent adhesion to most surfaces  
Can be applied to dry and wet surfaces

**Joint adhésif à base de MS polymères  
très résistant aux UV**

Excellente adhérence sur la plupart des surfaces  
S'applique sur surfaces sèches ou mouillées

**En hetstefte, UV-beständiges Klebe- und  
Dichtmittel auf MS-Polymerbasis**

Uitstekende hechtings-eigenschappen op de meeste ondergronden  
Aan te brengen op droge en natte oppervlakken

**En afdichtingslijm op basis van MS Polymeren  
met een hoge UV weerstand**

Uitstekende hechting op de meeste oppervlakken  
Kan toegepast worden op droge en natte oppervlakken

**Seglia incollata a base di polimero MS, resistente  
agli UV, per tutti i tipi di applicazioni**

Esaltanti caratteri sulla maggior parte dei materiali  
Adesione eccellente sia su superfici asciutte che bagnate





# KENT's high-quality solutions for professionals.

**Our cleaning, bonding and sealing products live up to the highest standards.**



KENT guarantees highest quality. Our know-how comes from more than 75 years' experience of developing premium products for professional cleaning, bonding and sealing.

Whatever task you need to complete – our high-quality cleaning, bonding and sealing products will completely meet your requirements. The results speak for themselves: perfect cleanliness, highly resistant bonding and reliable sealing.

All our products are easily applicable and completely safe. KENT cleaning, bonding and sealing products are indispensable for your business – try it for yourself!



## Content

	Cleaning	<b>04</b>
	Bonding	<b>06</b>
	Sealing	<b>11</b>
	Additional products	<b>14</b>



# Cleaning

Our high-quality cleaning products are the clean solution for your working space. Be it oily or fatty substances, persistent contamination, adhesive residue or contaminations of another sort; KENT cleaning products are reliable, effective and easily as well as quickly applicable. Tools, objects of all kind, soft or hard surfaces including glass, and furniture – we offer a suitable cleaning product for all demands. Enjoy perfect cleanliness at its best.



## Soft Surface Cleaner

**Versatile and non-aggressive soft industry cleaner.**

KENT Soft Surface Cleaner is a powerful, efficient solvent which removes contaminations, oil and fat without damaging sensitive surfaces. Application on aluminium, metal, wood, cement, most synthetic materials, Plexiglas, mechanical plants and devices such as tools, engines, chains, tiles and most varnished surfaces.

### Application

1. Spread on area to be cleaned
2. Let absorb
3. Wipe surface with a clean, dry towel

### Advantages

- ✓ Removal of contamination even in places difficultly accessible
- ✓ Applicable on nearly all surfaces, including synthetic materials
- ✓ Removes adhesive residues, flux residues, resins, nicotine and much more

Part No. 34405	500 ml	aerosol
Part No. 85709	1 l	can
Part No. 34413	25 l	canister



## New All Purpose Foam Cleaner

**All-purpose foam cleaner for a finish free of stripes and residue.**

The NSF-registered all-purpose cleaner has a wide range of application. It can be used on firm as well as soft surfaces. The KENT All Purpose Foam Cleaner cleans quickly and is easy to handle. The strong foam formation guarantees a long absorption period and minimal soaking of material. The result is a perfect finish and a fresh smell.

### Application

1. Spray on surface from a distance of 25 - 30 cm
2. Let absorb and rub dry with clean towel
3. Repeat for persistent contamination

### Advantages

- ✓ Quick dry and easy application
- ✓ Cleanliness without stripes and perfect shine
- ✓ Free from D-limonene

Part No. 84909	750 ml	aerosol
----------------	--------	---------



Nonfood Compounds  
Program Listed (Category C1)  
Registration 151415

# Bonding

The high-quality bonding products from KENT are the first choice for all permanent and highly permanent bonds. Whether as an aerosol, as a tape, as a cream application or even as a simultaneous seal: our powerful products bond and adhere efficiently and safely.

Their wide range of application covers bonding of objects on surfaces, bonding of textiles, synthetic materials and metals as well as mending.



## Rotabond 2000

**High-performance 1K-MS-polymer adhesive and sealer.**

KENT Rotabond 2000 bonds extraordinarily well, having a tensile strength of approximately 26 kg/m<sup>2</sup>. It is applicable on painted and blank metal, galvanised surfaces, aluminium, copper, powder-coated metal, brass, natural stone and most non-re-fattening synthetic materials. It furthermore reliably bonds glass, mirrors, fiberglass, rubber, ceramic, concrete and polystyrene.

### Application

1. Clean surface with KENT Soft Surface Cleaner
2. Apply required amount of KENT Rotabond 2000
3. If desired, apply paint immediately or after skin formation

### Advantages

- ✓ NSF-registered and German Lloyd certified
- ✓ Can be wet-in-wet painted, no odour nuisance
- ✓ Weather- and UV-resistant, free of solvents and isocyanate

Part No. 34452	290 ml	cartridge - black
Part No. 34453	290 ml	cartridge - brown
Part No. 34454	290 ml	cartridge - white
Part No. 34456	290 ml	cartridge - grey
Part No. 85465	290 ml	cartridge - silver-grey



## Rapid Bond

**Two-component adhesive on methacrylate base.**



Ideal for the structural bonding of metal (including aluminium and stainless steel), composite material, many synthetic materials (including ABS, acryl, vinyl, PVC, polycarbonate) epoxy laminates, and gelcoats requiring a high stiffening force.

### Application

1. Roughen surface mechanically and clean with KENT Soft Surface Cleaner
2. Open mixer jet and insert cartridge into gun
3. Apply KENT Rapid bond directly to one adhesive partner and press the other on to it
4. Remove excess bond with a scraper

### Advantages

- ✓ Available with drying period of 5 - 7, 15 or 60 minutes
- ✓ Ideal for permanent structural bonding
- ✓ Minimal preparation of surface required and wide application range

Part No. 85042	250 ml	cartridge (5 - 7 minutes drying period)
Part No. 85251	250 ml	cartridge (15 minutes drying period)
Part No. 85253	250 ml	cartridge (60 minutes drying period)
Part No. 85043	50 ml	double-cartridge (5 - 7 minutes drying period)
Part No. 85045	6 pieces	long mixer jets for 250 ml cartridge
Part No. 86031	12 pieces	short mixer jets for 50 ml double-cartridge



## Multi-Tape

**Specifically treated hard-wearing all-round tape.**

KENT Multi-tape can be used for various bonding and sealing tasks. Seal your heating and air-conditioning systems, protect your wiring and wiring harnesses, or fix various components or your safety cover or tarpaulin in- or outdoors.

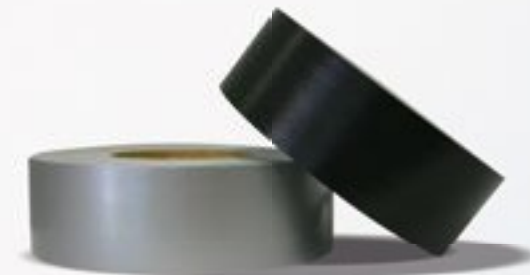
### Application

1. Tear off required amount of tape
2. Attach tape to surface and press hard
3. Lift at an edge and pull carefully to remove

### Advantages

- ✓ Resistant even when in contact with water
- ✓ Strong fix and wide range of application
- ✓ Prevents penetration of humidity and water

Part No. 84592	50 mm x 50 m roll	black
Part No. 86144	50 mm x 50 m roll	silver





## Easy Grip

High-quality fastening system.

The one-piece KENT Easy Grip velcro tape uses the method of meshing synthetic nubs. A solid bond results after applying pressure to it. It can always be loosened, opened and reused.

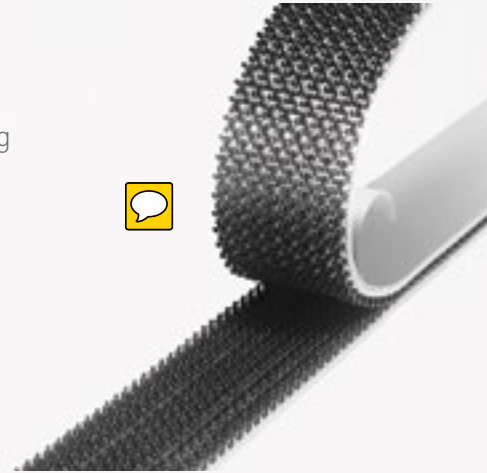
### Application

1. Make sure surface is clean, fat-free and dry
2. Cut of required amount of velcro and attach to surface
3. Repeat the first two steps on other half
4. Press the halves together for a strong, reliable bond

### Advantages

- ✓ No need for screws or drills
- ✓ Weather- and UV-resistant
- ✓ Invisible bonding on a wide range of surfaces
- ✓ Saves time and reduces costs as only one product is needed

Part No. 86446 25 mm x 3 m roll



## High Strength Tape

Two-sided high-performance adhesive tape in different widths.

The KENT High Strength Tape was developed especially for industrial purposes. Due to its extraordinary adhesive strength it can replace mechanical bonding. It is applicable on a great number of smooth surfaces and guarantees a long lasting adhesion.

### Application

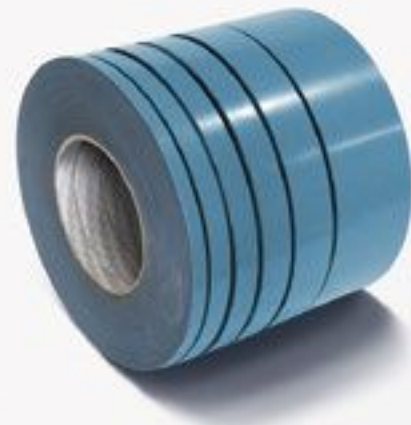
1. Clean surface with KENT Soft Surface Cleaner
2. Cut of required amount of KENT High Strength Tape and attach it – full adhesive capacity after 24 hours

### Advantages

- ✓ For all smooth surfaces such as metal, glass, most synthetic materials, masonry, wood and many more
- ✓ Optimal and easy adhesion, completely water-proof

Part No. 34000 15 m roll width 6 mm  
Part No. 34118 15 m roll width 9 mm  
Part No. 40519 15 m roll width 12 mm  
Part No. 40520 15 m roll width 16 mm  
Part No. 40521 15 m roll width 25 mm

Part No. 34117 7 m roll width 6 mm  
Part No. 34119 7 m roll width 12 mm  
Part No. 34120 7 m roll width 15 mm  
Part No. 34121 7 m roll width 25 mm



## Super Bond 2

Universal superglue of medium viscosity for robust and durable mending.

KENT Super Bond 2 is the all-round superglue from the KENT Super Bond series. Its viscosity is optimal: liquid enough to enter into the adhesive site but still thick enough not to drip or leak away. Applicable on nearly all surfaces: steel, aluminium, PCV, Plexiglas, Polycarbonate, ABS, firm polystyrene, elastomers (e.g. rubber), glass, cardboard, paper, leather and many more.

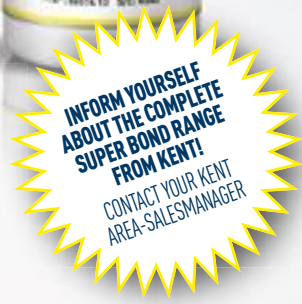
### Application

1. Clean surfaces with KENT Soft Surface Cleaner
2. Carefully apply KENT Super Bond 2 onto one of the surfaces.
3. Immediately press surfaces together, taking care that their position is correct
4. Make sure Bond spread out by applying pressure
5. Do not adjust or move items until bond has dried (a few seconds)
6. Clean bottle top and close bond swiftly

### Advantages

- ✓ Optimal viscosity – can be applied to nearly all surfaces
- ✓ Improved formula – heat-proof up to 120 degrees
- ✓ Powerful – high tensile and shear force

Part No. 86514 20 g bottle



## Multi Purpose Spray Adhesive

Spray adhesive with superglue-properties and high bonding power.

KENT Multi Purpose Spray Adhesive is a non-chloride spray adhesive with a strong initial adhesion. The long open period allows easy adjustments even on large surfaces such as textiles, carpets, foam materials, cork, cardboard, wood, rubber, metal and most synthetic materials.

### Application

1. Spray both pre-cleaned surfaces with KENT Multi Purpose Spray Adhesive
2. Wait 30 seconds and then press surfaces together
3. Release spray by spraying up-side-down and remove overspray with KENT Soft Surface Cleaner

### Advantages

- ✓ Strong initial adhesion - no need for pinning or pressing
- ✓ Economic – effective already with thin appliance
- ✓ Free of chloride solvents, low danger

Part No. 85556 500 ml aerosol



## Patch 'n' Bond 2

Exclusive epoxied mending based on epoxied resin.

KENT Patch 'n' Bond 2 can be applied on humid or wet surfaces or even under water (salt and fresh water). It firmly bonds fiberglass, metal, wood, concrete, ceramic, glass and so on. Its initial greenish colour will change to a fiberglass white during the hardening process.

### Application

1. Roughen surface mechanically and clean it with KENT Soft Surface Cleaner
2. Cut off required amount and knead it carefully until it has a homogenous colour. Kneading can be facilitated if mass is warmed up to slightly above room-temperature.
3. Press onto surface (not later than two minutes after kneading)
4. To fill cracks and holes, press mass into them and cut away remaining (use a tool cleaned with warm water)
5. For a smooth surface, simply wipe over area with a damp hand or towel before it hardens
6. After 15 - 20 minutes, mass will harden to a metallic consistency
7. After full hardening process (45 minutes) area can be smoothed, drilled, carved and so on

### Advantages

- ✓ Hardens to metallic consistency in only 45 minutes
- ✓ Does not shrink or subside, hardens even under water
- ✓ Can be smoothed, drilled, carved, sawed, turned or milled only 45 minutes after application

Part No. 45335 114 g stick



# Sealing

Reliable seals need an expert: KENT. Our products fulfil their duties perfectly. This includes clean and precise emergency-interventions for leaks, the quick and reliable sealing of pipe threads and the replacement of rubber and other seals. Our high-quality products for workshops and industry offer high resistance and application safety. Because sealing is all about the optimal solution.

## Sil Pack

High-performance all-round sealing product for industrial purposes.

KENT Sil Pack can be used to replace any kind of rubber seal, including those in gearboxes, hydro-pumps, engines and cases and likewise. It has excellent electric sealing properties. Sil Pack seals are resistant to most heavy fuels and light oils.

### Application

1. Clean both surfaces with KENT Soft Surface Cleaner and flash off
2. Apply an even amount the size of a worm onto one surface
3. Press surfaces together until desired distance is reached

### Advantages

- ✓ 1000 seals with one package
- ✓ Easy and safe application
- ✓ No damage to sensors or catalysts
- ✓ Wide range of applications – therefore less storage room required

Part No. 34461 200 ml pressure pack  
Part No. 34462 200 ml pressure pack  
Part No. 84181 100 ml pressure pack





## Multi Seal Tape

**High-performance sealing tape.**

This adhesive tape is a superb alternative to liquid adhesive. It can be used as first aid for leaks of trailers, gutters, metal cases, tarpaulins, seals, skylights and other openings.

### Application

1. Clean surface with KENT Soft Surface Cleaner and allow to dry
2. Attach tape to all areas to be bonded
3. Press with a soft roll and remove protective foil
4. Apply renewed pressure, especially in uneven places



### Advantages

- ✓ Bonds on most metals and synthetic materials and can be painted immediately
- ✓ Applicable on uneven surfaces, cross sections, corners, rivets and screw heads
- ✓ Weather-resistant – does not rip, does not get brittle

Part No. 86386 38 mm x 5 m roll

## Python Wrap

**Time-efficient universal leak-repair kit.**

KENT Python Wrap is the best choice for high-performance immediate repair of leaks in pipes, exhaust systems and so on. No mixing necessary. It activates with water and hardens quickly.

### Application

1. Roughen and clean areas to be mended. Caution: Pipes must not be under pressure.
2. Remove protective foil from the back of the plaster and attach directly to the crack or leak
3. Open foil bag wearing enclosed gloves and put it into warm water for 20 seconds
4. Wrap Python Wrap around leak to height of app. 5 cm, apply pressure and turn in direction of wrapping



### Advantages

- ✓ Easy application – odour free and non-flammable
- ✓ Resistant to petrol, oil, acids, alkali and various other chemical compounds
- ✓ Can be grinded and painted, dries within 30 minutes

Part No. 30207 50 mm x 1,5 m roll  
Part No. 30242 75 mm x 2,7 m roll  
Part No. 30257 100 mm x 4,5 m roll

## Pipe Seal

**Teflon® based anaerobic one-component pipe seal.**

KENT Pipe Seal is an anaerobic 1K pipe seal with PTFE. It is a thixotropic gel, which hardens fast due to contact with metal in exclusion of oxygen. The seal is resistant to 10 bar immediately after hardening and to up to 350 bar after completed hardening process.

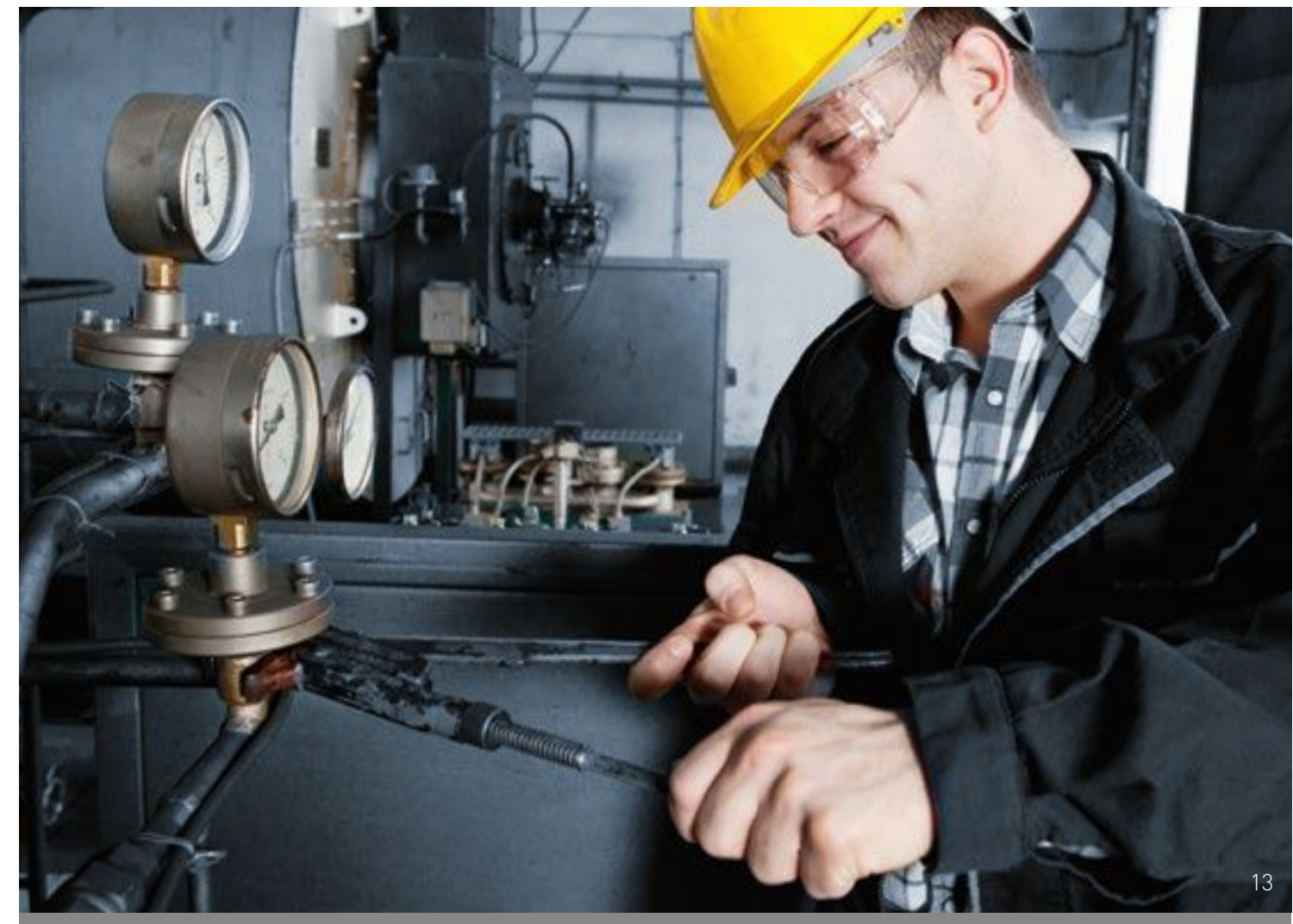
### Application

1. Pipes must be dry, clean and fat- and oil-free
2. Apply sufficient amount onto one part of the threads and combine components
3. Allow to harden

### Advantages

- ✓ Hardening time of less than 15 minutes at 20 degrees.
- ✓ Temperature-resistant from -50 up to 150 degrees
- ✓ Resistance of 6 - 13 N/mm<sup>2</sup> (DIN 54452)

Part No. 85264 50 ml bottle



# Additional products

Professional paintwork can be perfected by the use of our high-performance, high-resistance KENT cover tapes. Achieve all-over perfect results.

## Japanese Flat Masking Tape

Cover tape in various widths, perfect for painting.

KENT Japanese Flat Masking Tape is perfectly suitable for covering and masking during paintwork. Guaranteed precise paint-edges without clogging. It adjusts to edges and bends and can be used even in combination with water-based paints.

### Application

1. Attach tape to edges of object to be painted
2. Apply extra pressure to tape in bends and edges
3. Remove tape after paint has dried out completely



### Advantages

- ✓ No residue
- ✓ Guaranteed precise paint-edges without clogging. It adjusts to edges and bends and can be used even in combination with water-based paints

Part No. 85778	6 mm x 50 m	box with 5 rolls
Part No. 85779	9 mm x 50 m	box with 5 rolls
Part No. 85780	12 mm x 50 m	box with 5 rolls
Part No. 85781	19 mm x 50 m	box with 3 rolls

Part No. 85782	25 mm x 50 m	box with 3 rolls
Part No. 85783	38 mm x 50 m	box with 3 rolls
Part No. 85784	50 mm x 50 m	box with 3 rolls

## Aquasealer

An extremely flexible seal based on MS-polymer.

Aquasealer creates a water-proof layer on all vertical and horizontal surfaces such as cellar walls, cement foundations or cement ceilings and seals wall-floor-corners.

### Advantages

- ✓ Low viscosity – prevents penetration by humidity
- ✓ Safe application – isocyanate-, silicon-, bitumen- and solvent-free
- ✓ Applicable on all surfaces and even on humid areas



Part No. 85825	1 kg	can
Part No. 85827	14 kg	bucket



## Adhesive Backed Shim Stock

Sponge rubber-tape with a wide range of application and self-bonding back.

Sponge rubber seal with a wide range of application and self-bonding back, which can be used to fill or even cavities. Removes wind-, water-, and dust-leaks, muffles clattering and is self-bonding on most surfaces.

### Application

1. Clean Surface with KENT Acrysol
2. Attach KENT Adhesive Backed Shim Stock and press lightly
3. Check that cavity is completely covered and tape is in the right position
4. Apply pressure to entire length
5. For large cavities, multiple layers of KENT Adhesive Backed Shim Stock might be necessary
6. Remove excess material with a sharp knife

### Advantages

- ✓ Easy application, bonds to all surfaces
- ✓ Highly adaptive and flexible, UV- and ozone-resistant
- ✓ Seals against water penetration
- ✓ Resistant to oil and fuel

Part No. 46480	6,3 x 4,0 mm	9 m roll
Part No. 46490	9,5 x 8,0 mm	9 m roll
Part No. 46495	9,5 x 11,0 mm	9 m roll
Part No. 40125	12,5 x 8,0 mm	9 m roll
Part No. 40130	12,5 x 14,3 mm	9 m roll
Part No. 40100	16,0 x 3,0 mm	15 m roll
Part No. 46505	19,0 x 11,0 mm	9 m roll
Part No. 46515	25,4 x 14,3 mm	9 m roll
Part No. 46510	25,4 x 8,0 mm	9 m roll
Part No. 46475	32,0 x 3,0 mm	15 m roll



## Copyright and safety note

Publisher and Copyright: KENT UK Ltd.  
Photos: KENT Group  
Concept/Layout: VAMOS! [www.agentur-vamos.de](http://www.agentur-vamos.de)

Reprint, also in excerpts, permitted only upon agreement with KENT (United Kingdom) Ltd. The information in this document is based on our experience and knowledge at the time of publication. It is meant to provide the qualified reader with application hints. The information does not absolve the user from first testing the selected product through application. We recommend a personal consultation. Always refer to the technical and safety data sheets before using the products. KENT products are constantly developed further. KENT therefore reserves the right of changing any technical data in this document at any time and without prior notice.

KENT (United Kingdom) Ltd, Forsyth House, Pitreavie Drive, Pitreavie Business Park, Dunfermline, Fife, KY11 8US  
[www.kenturope.com](http://www.kenturope.com)



